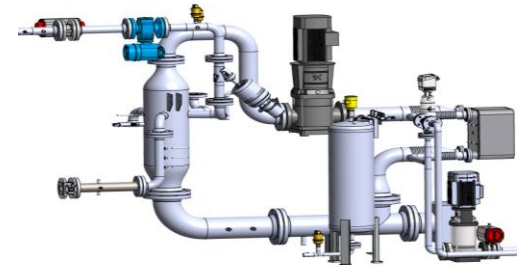


# Modular E-pump testing solution

Marting Albers, Michael Haug

Automotive Testing  
Europe  
Stuttgart  
June 06, 2018



**Model Based Design**

**Data management**

**Field Support**

**Calibration**

**Test benches**

**Optimizer**

**Thermal Management**

**Simulation**

**Virtual Sensors**

**HiL Testing**

**Powertrain Control**

**Simulation**

**Tools**

**Function Development**

**HVAC**

## Motivation

- Rapidly increasing demand for electrical driven components
- On-demand supply of cooling for conventional, hybrid, fuel-cell, battery powertrains -> Large variety of applications
- Rigid conditions from -40 up to 150 °C for coolant and ambient



## Request

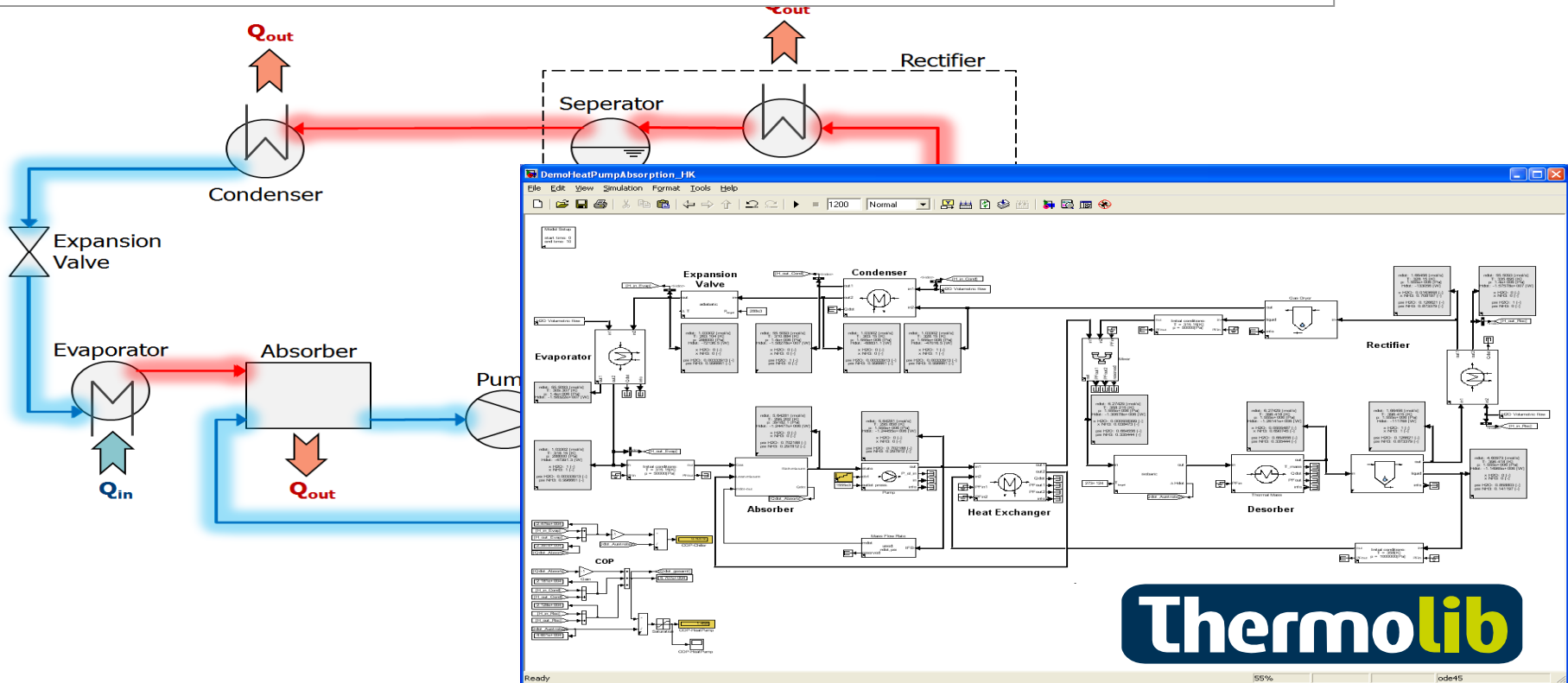
- Easy and quick adaptation to specific customer needs
- Robust and highly reliable design
- Mechanical, electrical and digital competences
- Short delivery time and attractive price level

## Our approach

- Fully digital development process
- Data driven development and analysis
- Modular, extendable and scalable design
- Easy adaptation to customer needs
- Approved technologies (hard- and software)
- Quick assembly and installation

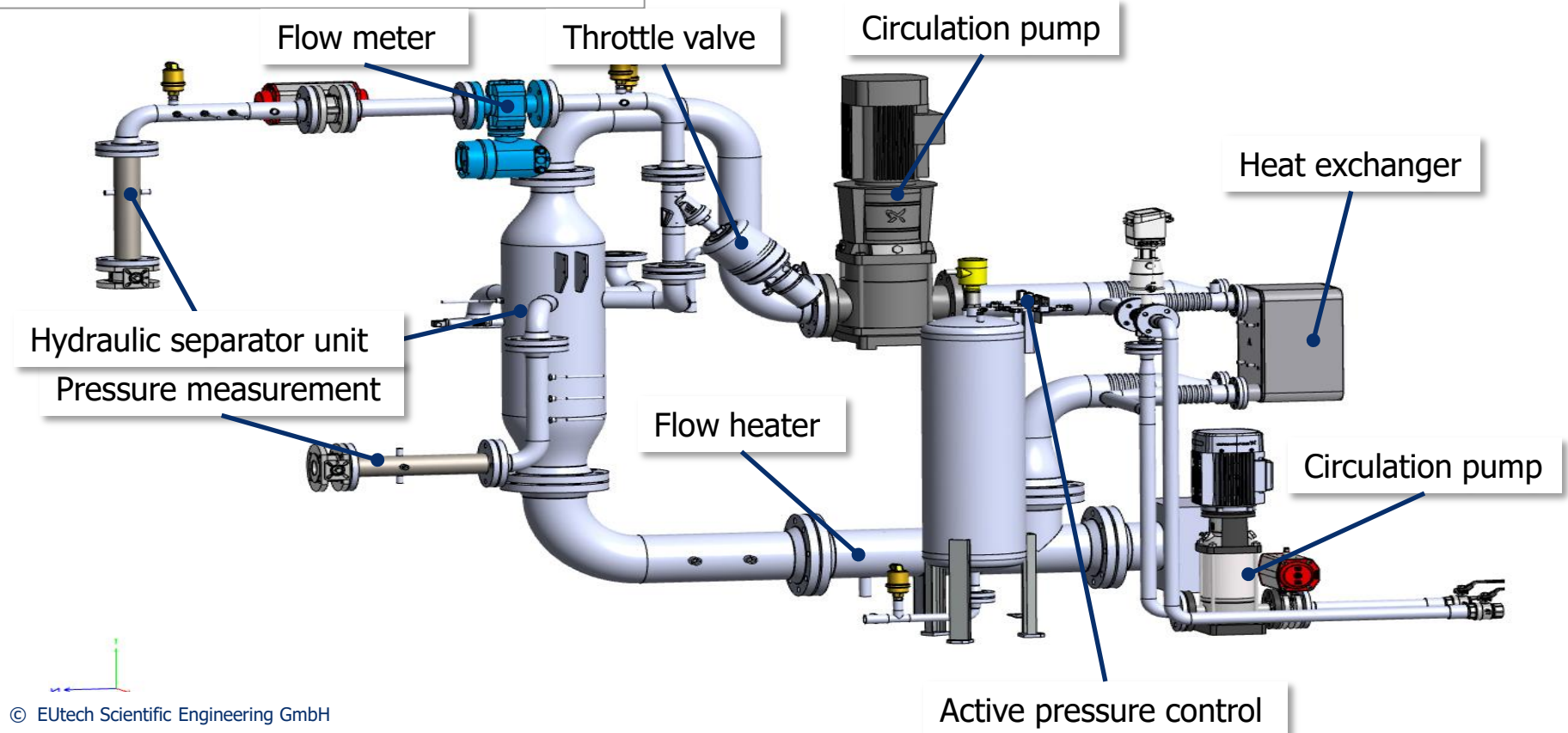
# Modular E-pump testing solution

„Digital twin“ - for development, analysis and lifetime service



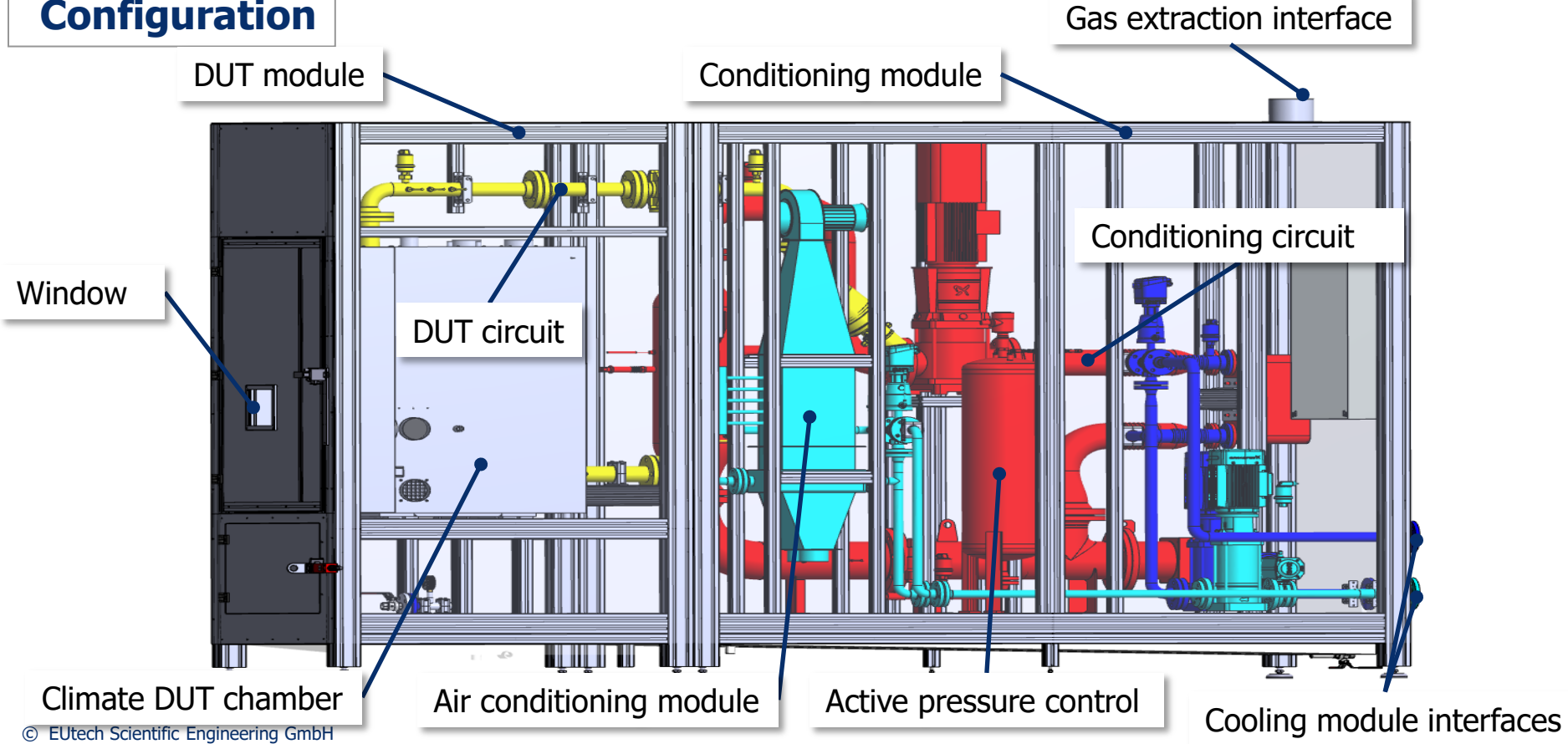
# Modular E-pump testing solution

## Conditioning and DUT circuit



# Modular E-pump testing solution

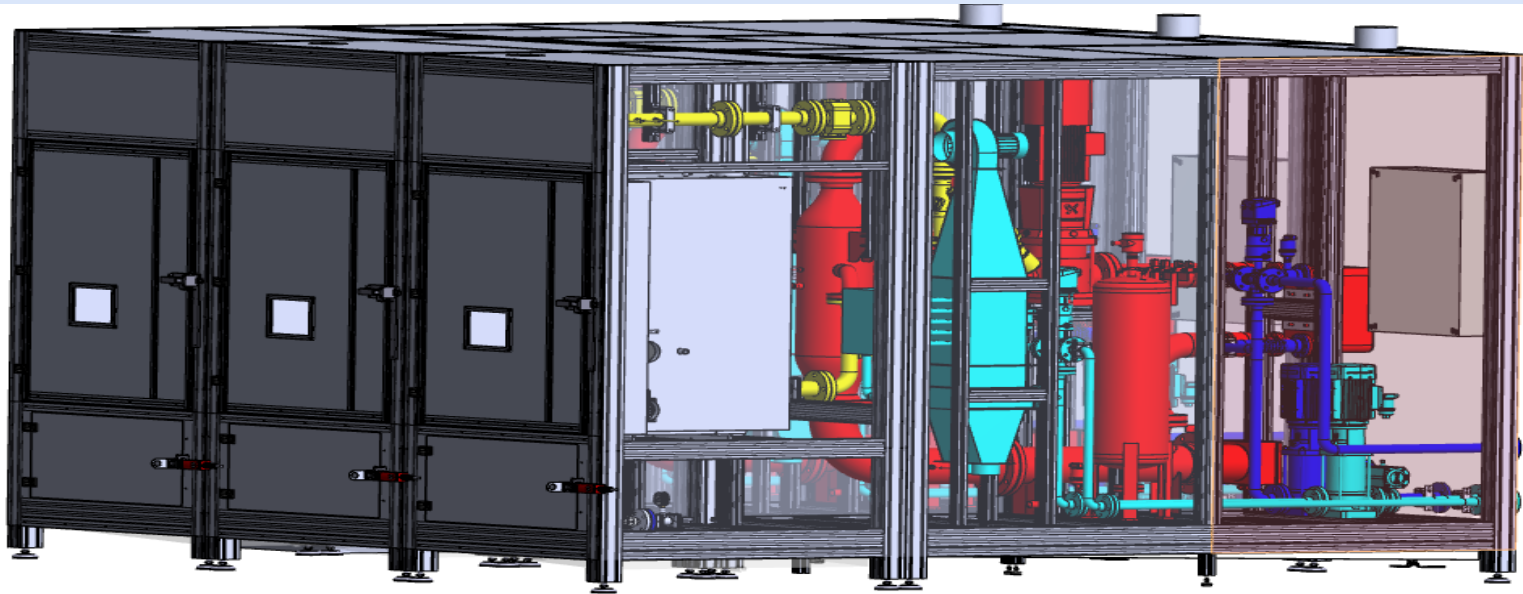
## Configuration



# Modular E-pump testing solution

## Extendable and scalable solution

- Combination of modules for small and large pumps or differing features is possible



# Modular E-pump testing solution

**Customized and tailored to specific needs**

Functional test  
and hydraulic  
development



Control  
development



Endurance test



# Modular E-pump testing solution



**EUtech**  
Scientific  
Engineering

## Double-pump module



# Modular E-pump testing solution

## Pump testing unit

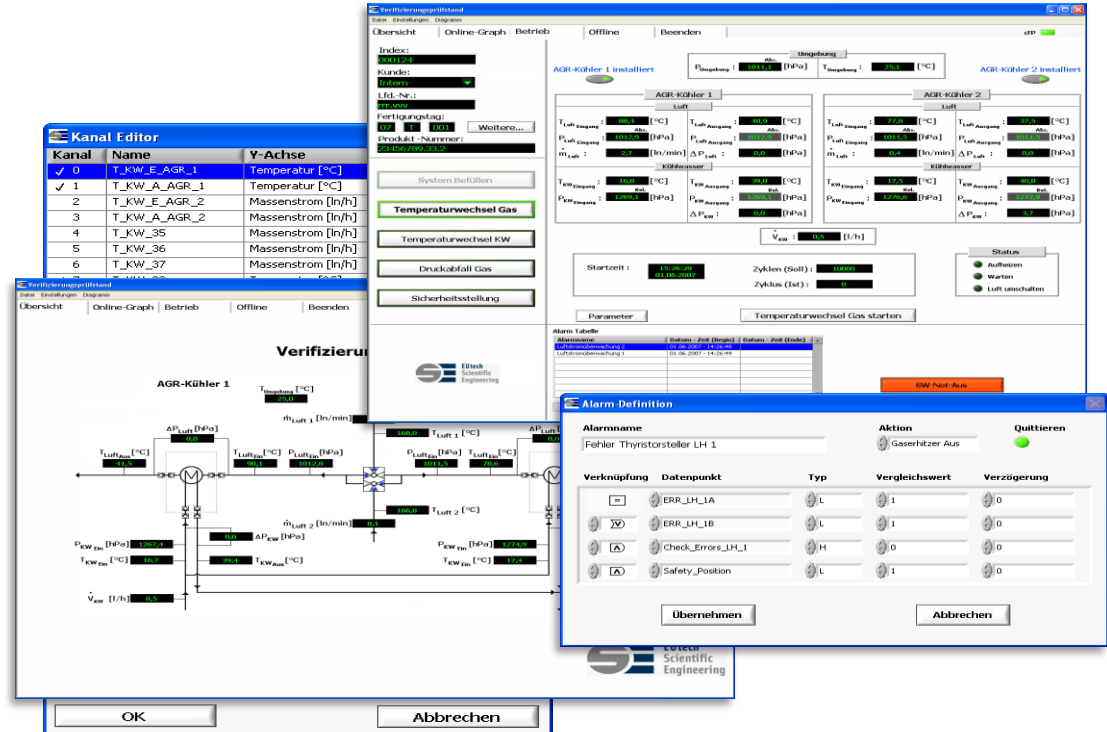
- Control solution is based on „all-inclusive“ development tool
  - Test bench conditioning
  - Pump communication & control
  - Measurement and data acquisition
- PWM/LIN/CAN Communication module
  - Scalable up to eight pumps/module



# Modular E-pump testing solution

## EUtest Software - test bench automation

- Visualisation
- Manual and automatic operation
- Editable, automated processes
- Autonomous operation
  - Automatic characteristic diagram
  - Signal acquisition and management
  - Data analysis
- Test bench monitoring
  - Alarm definition
  - Alarm handling
- Data management
- Remote-Service

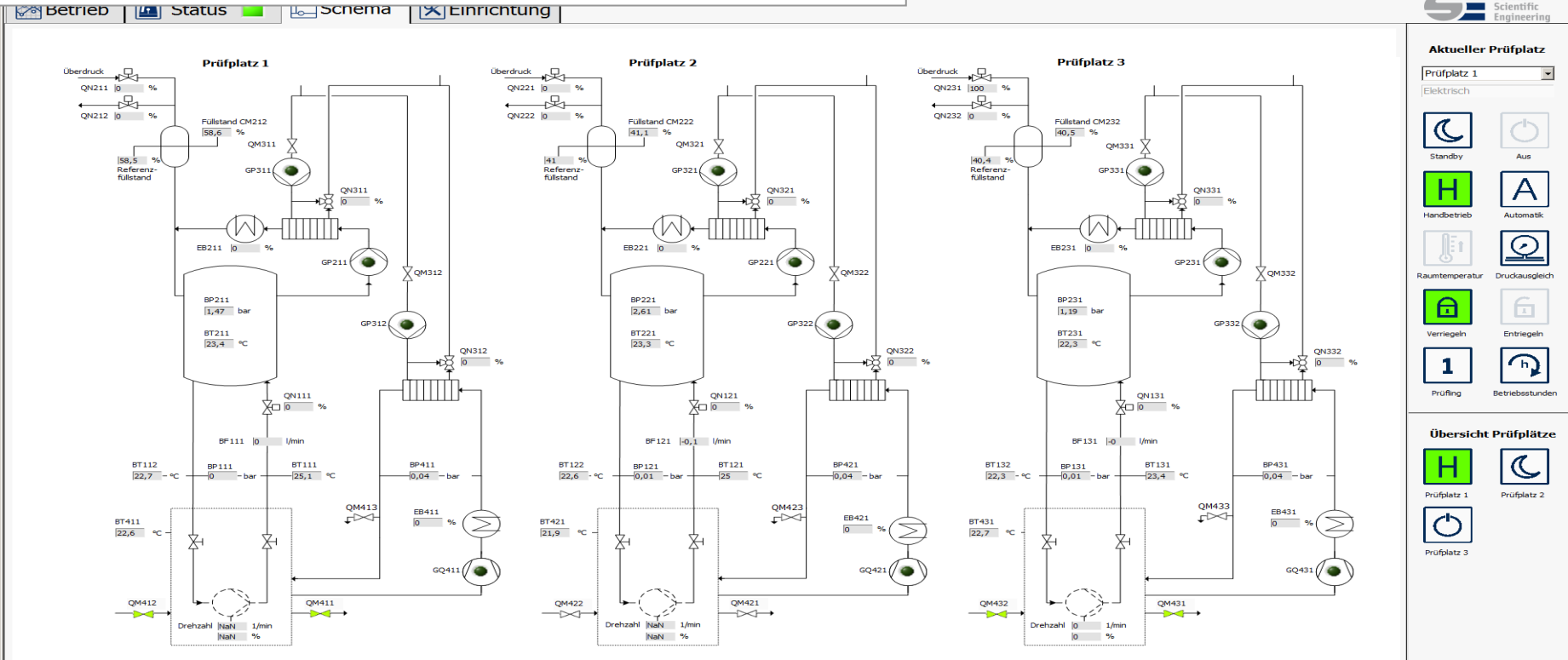


# Modular E-pump testing solution



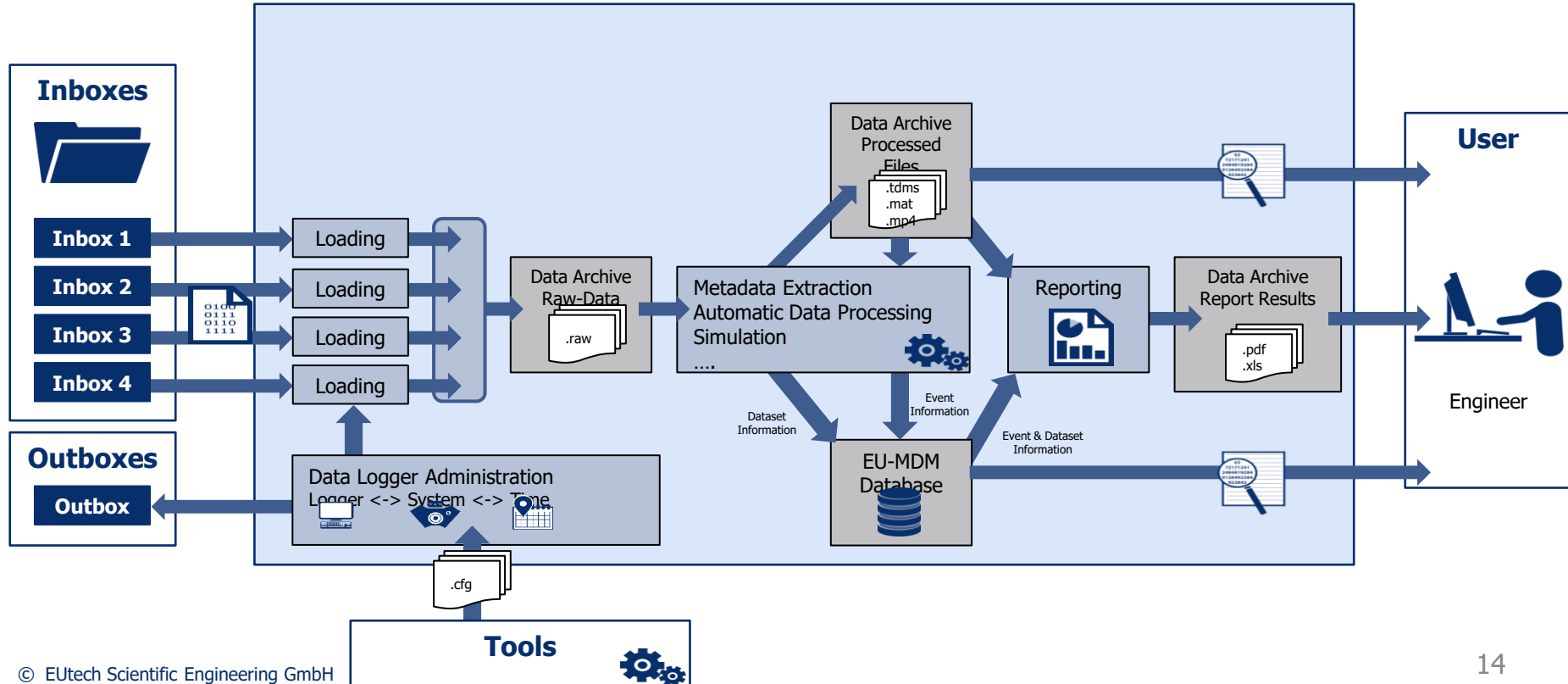
**EUTech**  
Scientific  
Engineering

## EUtest Software - test bench automation



# Modular E-pump testing solution

## Data management and analysis (EU-MDM)



**Thank you!**  
**[www.eutech-scientific.de](http://www.eutech-scientific.de)**