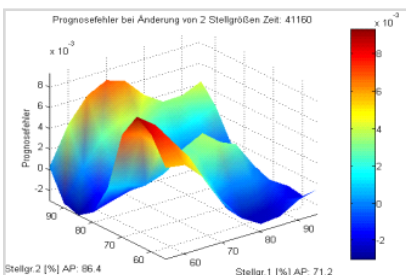
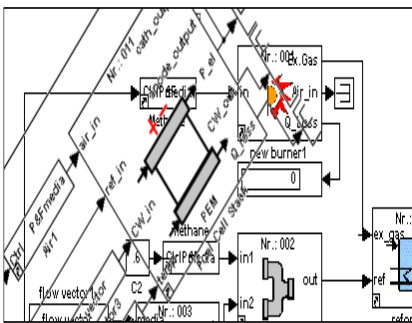
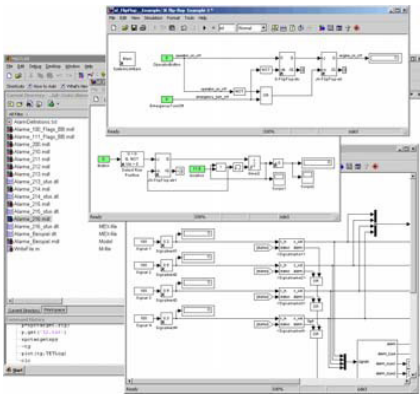


Calibration Engineer (m/w)

Job advertisement



EUTech Scientific Engineering provides engineering services to the automotive community as well as the heavy-duty and commercial engine industry. We support customers in application of fuel injection system with common rail functionality and of torque based engine ECU software with multiple engine modes. For these projects we are looking for an experienced calibration engineer.

Your tasks

- Active support of function development (Fuel injection system, air management, controller, performance functions, engine protection functions)
- Writing function specifications and execution of function FMEA or risk assessment
- Support and execution of RCP tests (Micro AutoBox, dSpace systems)
- Planning, preparation and execution of DOE's
- Generation of MATLAB models based on DOE's
- Execution of all calibration tasks during all phases of the project
- Cooperation in planning and structuring of complex calibrations (work-flows)
- Reporting calibration results
- Validation of calibrations

Your skills

- Experienced calibration engineer, preferably with diesel engines, Common Rail systems and exhaust aftertreatment systems (DPF, SCR)
- Experience with FMEA and risk assessments
- Keen perception and experience on the field function development
- Very familiar with RCP tools (Micro AutoBox, dSpace systems)
- Very familiar with DOE's and generation of MATLAB models
- Highly motivated and convinced team player
- Very experienced on engine testing and familiar with test bench automation systems (like AVL PUMA-Open o.a.)

If you are interested in taking responsibilities and joining our team in developing advanced Diesel, Gasoline and Hybrid powertrain to address future fuel economy and emissions requirements, EUTech is where you want to be.

Contact

Ms. Claudia Nöthen

Phone: +49 (0)241/963-3151

E-Mail: jobs@eutech.de